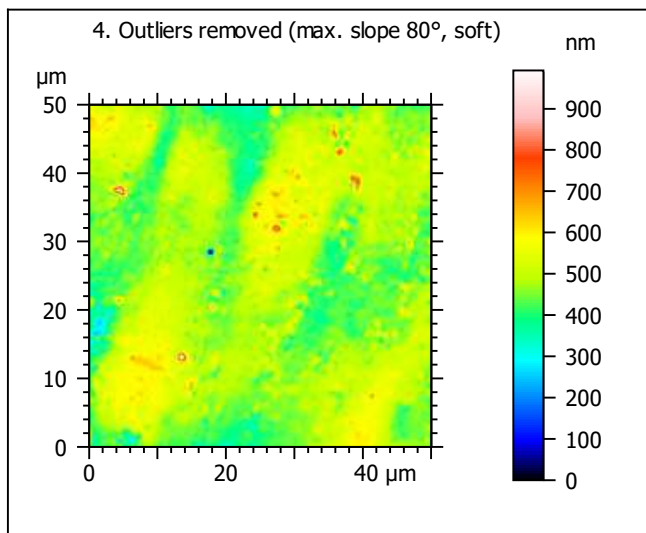
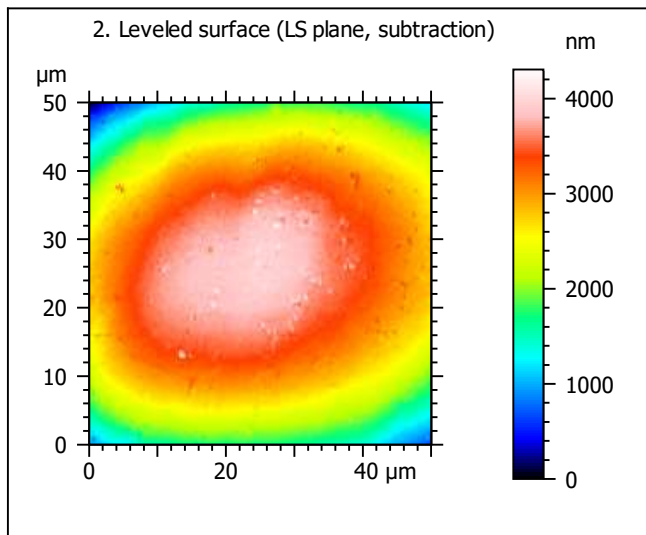
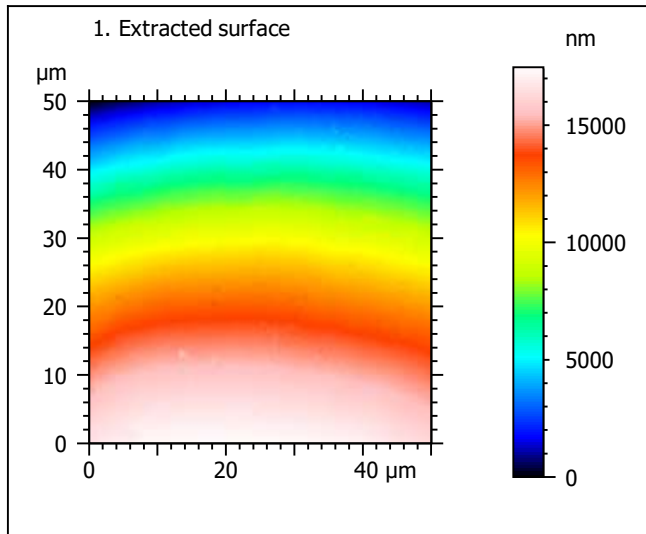
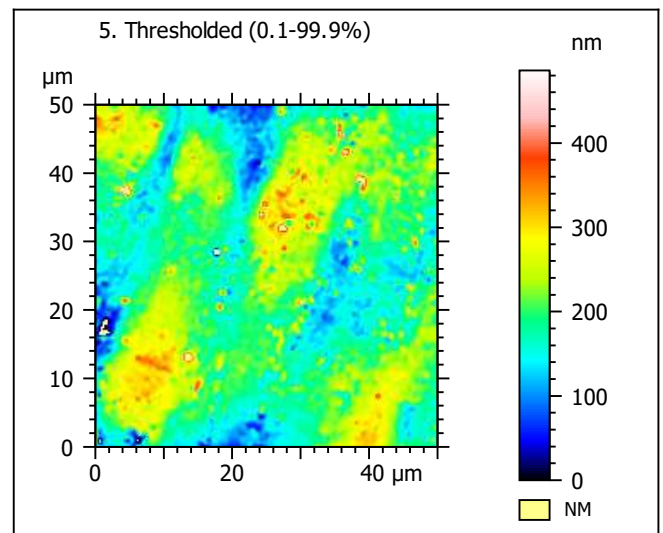
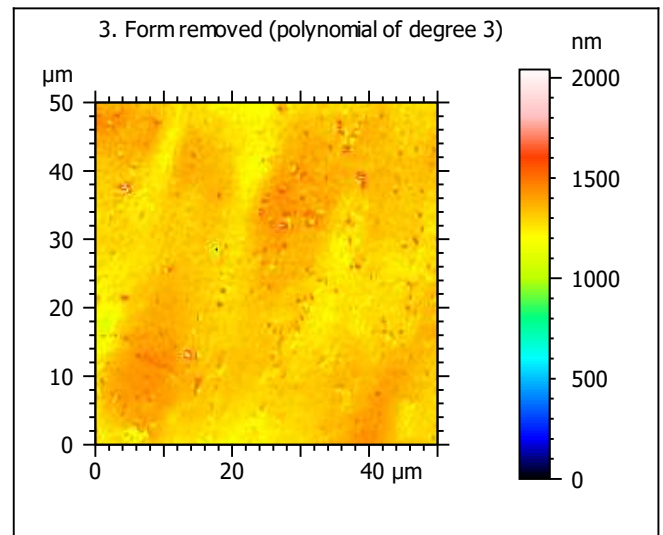


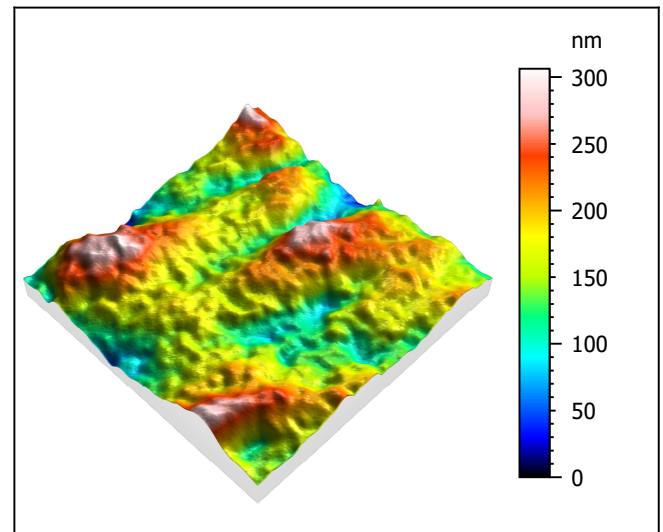
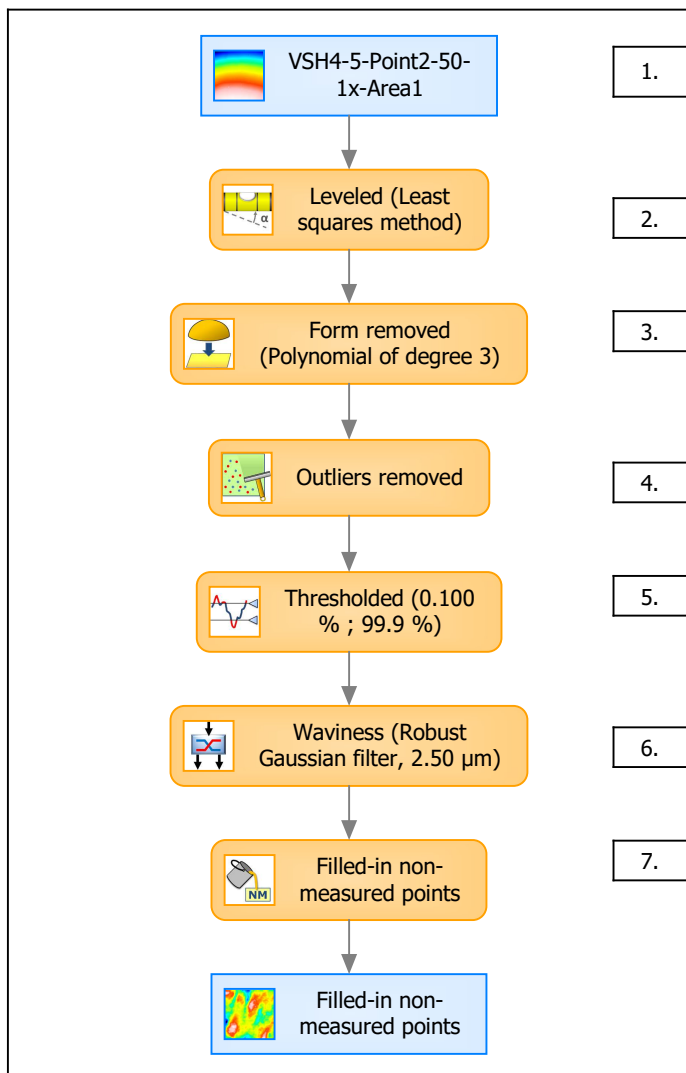
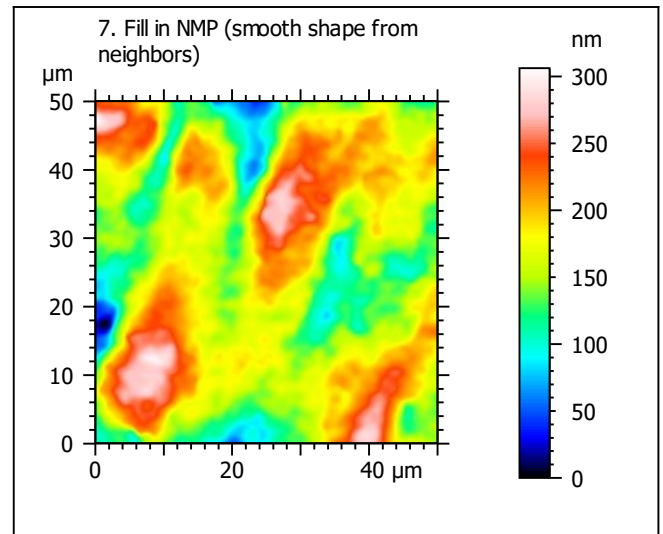
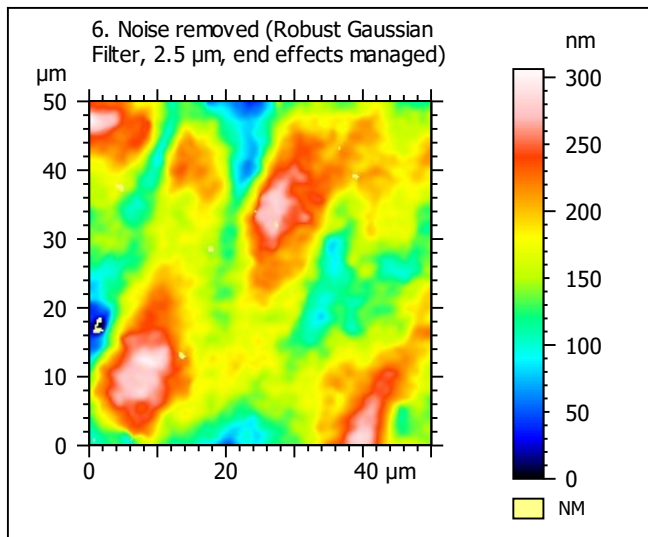
Template to process all extracted 50x50 μm surfaces, acquired with the LEXT 4000 with the 50x/0.95 objective at 1x zoom

A. Processing



| Identity card | | | |
|---------------|---|--------|--|
| Name: | VSH4-5-Point2-50-1x-Area1 | | |
| File path: | D:\Data\Anto...\VSH4-5-Point2-50-1x-Area1.sur | | |
| | | | |
| Axis: | X | | |
| Length: | 50.0 | μm | |
| Size: | 201 | points | |
| Spacing: | 0.250 | μm | |
| | | | |
| Axis: | Y | | |
| Length: | 50.0 | μm | |
| Size: | 201 | points | |
| Spacing: | 0.250 | μm | |
| | | | |
| Axis: | Z | | |
| Length: | 17473 | nm | |
| Size: | 13518 | digits | |
| Spacing: | 1.29 | nm | |
| NMP ratio: | 0.00 % (0 Pts) | | |





| Identity card | | | |
|---------------|--|--------|--|
| Name: | VSH4-5-Point2-50-1x-Area1 > Levelled (Least... | | |
| | | | |
| Axis: | X | | |
| Length: | 50.0 | μm | |
| Size: | 201 | points | |
| Spacing: | 0.250 | μm | |
| | | | |
| Axis: | Y | | |
| Length: | 50.0 | μm | |
| Size: | 201 | points | |
| Spacing: | 0.250 | μm | |
| | | | |
| Axis: | Z | | |
| Length: | 306 | nm | |
| Size: | 237 | digits | |
| Spacing: | 1.29 | nm | |
| NMP ratio: | 0.00 % (0 Pts) | | |

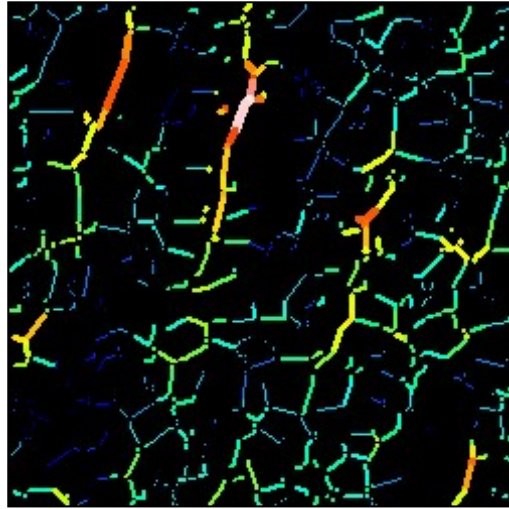
Analyses:
8. ISO 25178
9. Furrow
10. Texture isotropy and direction
11. SSFA

B. Analyses

8. ISO 25178-2 parameters on surface #7

| ISO 25178 | | |
|--------------------------------|---------|----------------------------------|
| Height Parameters | | |
| Sq | 46.8 | nm |
| Ssk | 0.102 | |
| Sku | 2.94 | |
| Sp | 136 | nm |
| Sv | 171 | nm |
| Sz | 306 | nm |
| Sa | 37.2 | nm |
| Functional Parameters | | |
| Smr | 100 | % |
| Smc | 63.4 | nm |
| Sxp | 86.6 | nm |
| Spatial Parameters | | |
| Sal | 4.90 | μm |
| Str | 0.276 | |
| Std | 176 | ° |
| Hybrid Parameters | | |
| Sdq | 0.0219 | |
| Sdr | 0.0241 | % |
| Functional Parameters (Volume) | | |
| Vm | 0.00227 | μm ³ /μm ² |
| Vv | 0.0653 | μm ³ /μm ² |
| Vmp | 0.00227 | μm ³ /μm ² |
| Vmc | 0.0417 | μm ³ /μm ² |
| Vvc | 0.0604 | μm ³ /μm ² |
| Vvv | 0.00482 | μm ³ /μm ² |

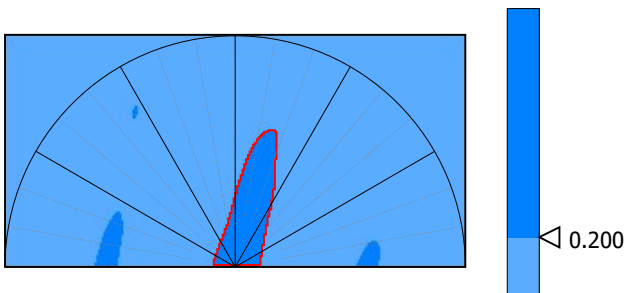
9. Furrow analysis surface #7



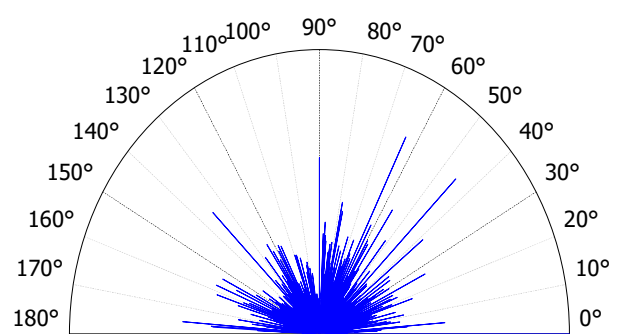
All furrows are shown.

| Parameters | Value | Unit |
|--------------------------|-------|--------|
| Maximum depth of furrows | 122 | nm |
| Mean depth of furrows | 39.7 | nm |
| Mean density of furrows | 2407 | cm/cm2 |

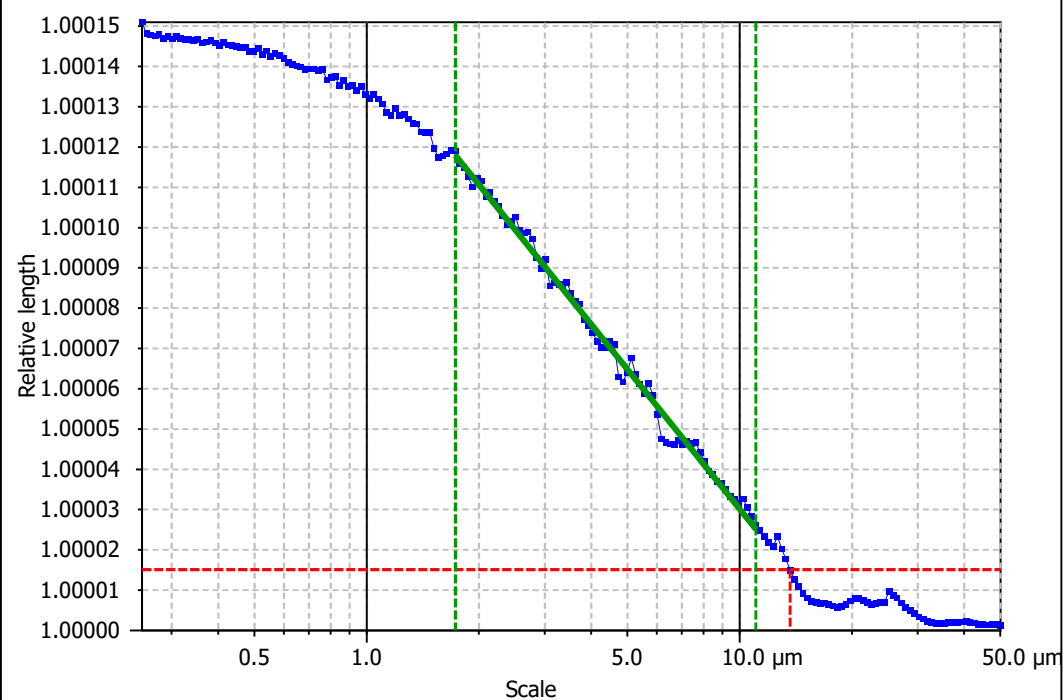
10. Texture isotropy and direction on surface #7



| Parameters | Value | Unit |
|---------------------|-------|------|
| Isotropy | 15.4 | % |
| Periodicity | 26.4 | % |
| Period | 14.0 | μm |
| Direction of period | 176 | ° |



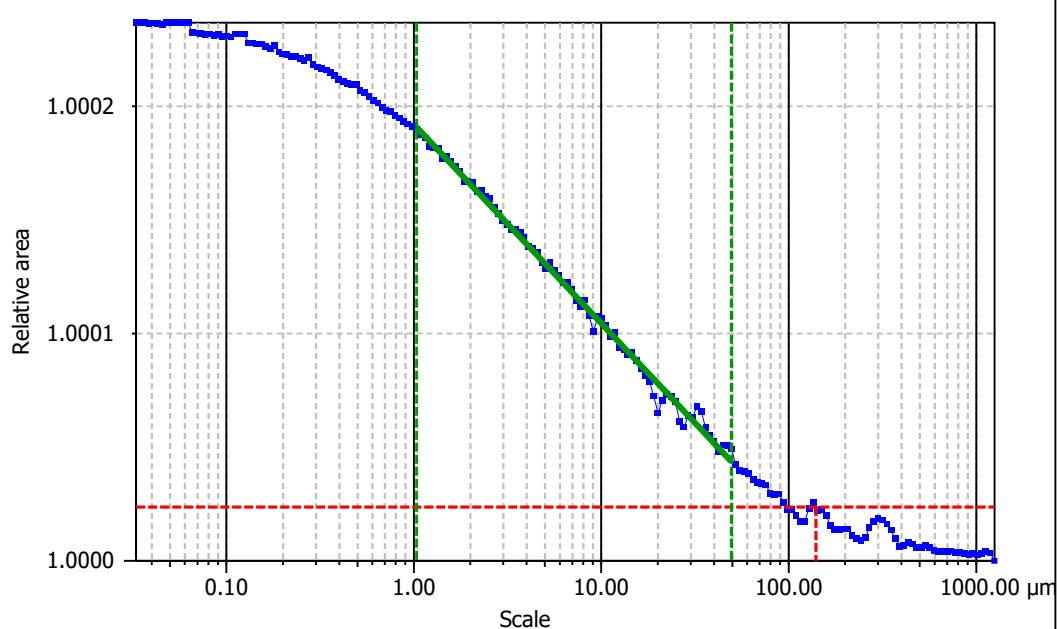
| Parameters | Value | Unit |
|------------------|-------|------|
| Isotropy | 27.6 | % |
| First Direction | 0.176 | ° |
| Second Direction | 63.5 | ° |
| Third Direction | 45.0 | ° |

**Information**

Method Length-scale (rows)

Parameters

| Value | Unit | Comment |
|--------|--------|--------------|
| epLsar | 0.0164 | (1.8 μm, 5°) |

**Information**

Method Area-scale (four corners)

Parameters

| Value | Unit | Comment |
|---------|-------|-----------------|
| Asfc | 0.038 | |
| Smfc | 6.95 | μm ² |
| HAsfc9 | 0.401 | (3x3) |
| HAsfc81 | 0.824 | (9x9) |